

EMI SINGLE FLOW SEAL WATER METER

www.eskopacific.com
EMI DATASHEET



Ideal for medium seal flush flow rates up to 8.5 GPM.

Easy installation with mounting plates and floor stands.

APPLICATIONS

- Sealing and cooling water measurement for single and double mechanical seal applications.

FEATURES

- Solid, reliable construction
- Large selection of flow ranges
- Easy to install and maintain
- Impact resistant flow tube
- Low flow alarm available

EMI SINGLE FLOW SEAL WATER METER

SPECIFICATIONS

MODEL	EMI-D	EMI-K	EMI-S
BODY MATERIAL	DELRIN® (POM)	KYNAR® (PVDF)	SS316
Metering tube	Grilamid® TR55 or Polysulphone (PSU)	Grilamid® TR55 or Polysulphone (PSU)	Grilamid® TR55 or Polysulphone (PSU)
Side plate	SS316	SS316	SS316
O-ring seals	Nitrile (optional Viton® or EPDM)	Nitrile (optional Viton® or EPDM)	Nitrile (optional Viton® or EPDM)
Maximum pressure	290 psi	290 psi	440 psi
Maximum temperature			
Grilamid® tube	176°F / 80°C	176°F / 80°C	176°F / 80°C
Polysulphone PSU tube	248°F / 120°C	248°F / 120°C	248°F / 120°C
Connections	1/2" NPT female threads	1/2" NPT female threads	1/2" NPT female threads
Weight	2.1 lb (0.95 kg)	2.1 lb (0.95 kg)	4.4 lb (2.0 kg)
Build options	Body material, metering tube, o-ring seals		
Optional accessories	Inductive adjustable alarm, pressure gauge (with optional red set pointer), mounting stand, flow marker for optimal flow rate or range, pair with constant flow regulator Model EFR		

EMI SINGLE FLOW SEAL WATERw METER

SEAL WATER MONITOR

EMI

DUAL TUBE MODEL

2

END BLOCK MATERIAL

Aluminum	A
Delrin (POM)	D
Kynar (PVDF)	K
SS316	S

FLOW RANGE

WATER

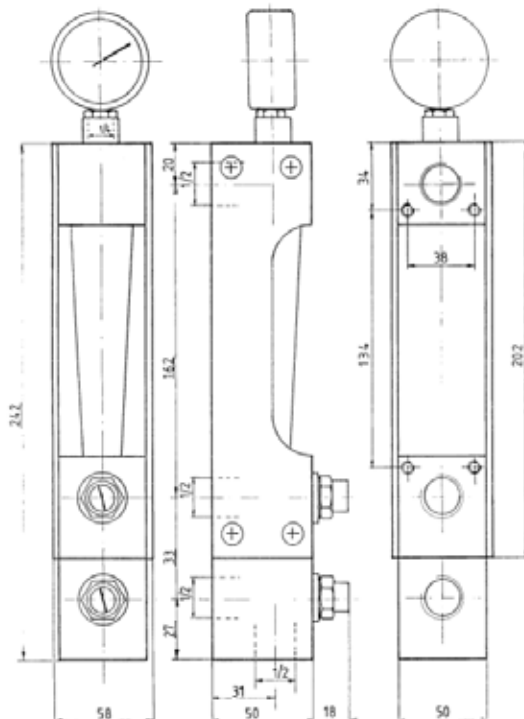
GPM	LPM	
0.5	2	A
0.9	3	B
1.4	5	C
2.2	9	D
2.6	10	E
4.25	16	F
6	22	G
8.5	32.5	H

SCALE

Water GPM	1
Water LPM	4
Relative Scale (1-10)	R

OPTIONS

PES/PSU flowtube	P
Viton o-ring seals	V
EPDM o-ring seals	E
Backpressure valve	B
Gauge (160 psi standard)	G
Mounting bracket	M



BODY MATERIALS



METERING TUBE



PRESSURE GAUGE



ALARM SENSOR